

# **A46 Newark Bypass**

**TR010065/APP/6.2**

## **6.2 Environmental Statement**

### **Figure 15.1 Zones of Influence**

APFP Regulation 5(2)(a)

Planning Act 2008

Infrastructure Planning (Applications: Prescribed Forms and  
Procedure) Regulations 2009

Volume 6

April 2024

Infrastructure Planning

Planning Act 2008

**The Infrastructure Planning  
(Applications: Prescribed Forms  
and Procedure) Regulations 2009**

**A46 Newark Bypass**

Development Consent Order 202[x]

---

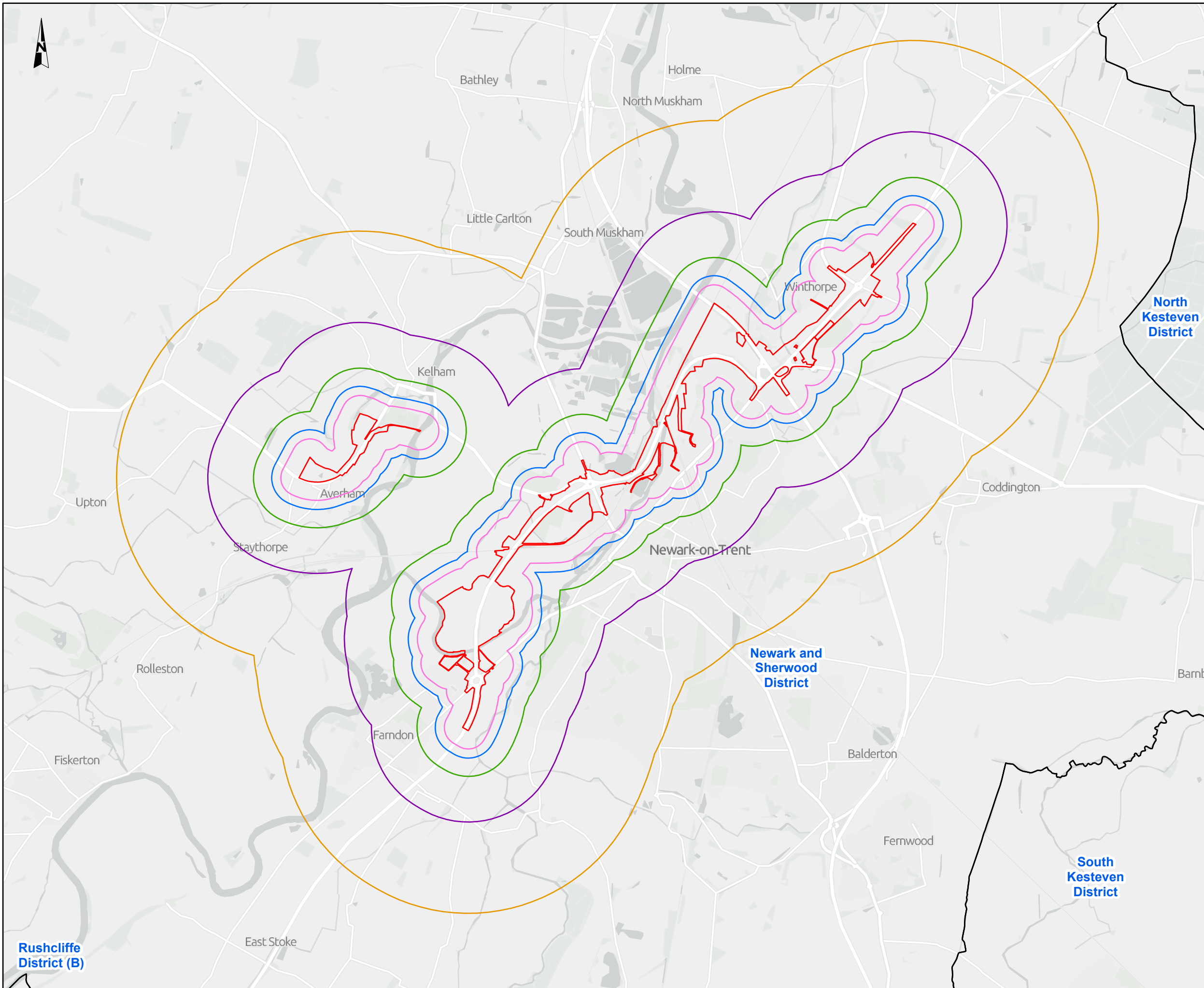
**ENVIRONMENTAL STATEMENT**

**Figure 15.1 Zones of Influence**

---

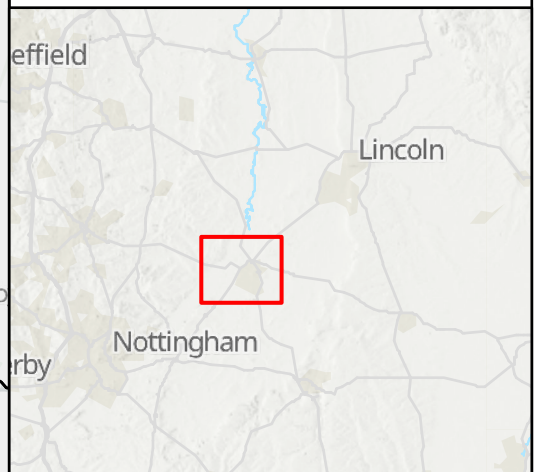
<b>Regulation Number:</b>	Regulation 5(2)(a)
<b>Planning Inspectorate Scheme Reference</b>	TR010065
<b>Application Document Reference</b>	TR010065/APP/6.2
<b>Author:</b>	A46 Newark Bypass Project Team, National Highways

<b>Version</b>	<b>Date</b>	<b>Status of Version</b>
Rev 1	April 2024	DCO Application



**NOTES**  
 Service Layer Credits  
 Contains OS data © Crown Copyright and database right 2023  
 Contains data from OS Zoomstack

- KEY TO SYMBOLS**
- Order Limits
  - Local Authority Boundary
  - 200m Zone of Influence: Air Quality (Construction)
  - 300m Zone of Influence: Noise and Vibration (Construction)
  - 500m Zone of Influence: Cultural Heritage - Non-designated Heritage Assets, Geology and Soils, Population and Human Health (Construction and Operation)
  - 1km Zone of Influence: Cultural Heritage - Designated Heritage Assets, Landscape and Visual Effects, Road and Drainage and the Water Environment (Construction and Operation)
  - 2km Zone of Influence: Biodiversity (Construction and Operation)



REV.	08/12/23	DCO APPLICATION	CD	SB	HF
AMENDMENT DETAILS	ORIG	CHK'D	APP'D		

CLIENT  
 national highways

PURPOSE OF ISSUE  
 DCO APPLICATION

DEVELOPMENT CONSENT ORDER NUMBER  
 TR010065

PROJECT TITLE  
 A46 NEWARK BYPASS

DRAWING TITLE  
 Figure 15.1  
 Zones of Influence

ORIGINAL SIZE A3 SCALE 1:40,000

DRAWING NUMBER HE551478	ORIGINATOR SKAG	VOLUME EGN	PROJECT REF NO. HE551478	REVISION C01
CONWI_CONW	DR	LE	00155	
LOCATION	TYPE	ROLE	NUMBER	

**Rushcliffe District (B)**

